

# 15th Floor (Sky Lounge)

## Suite 1500

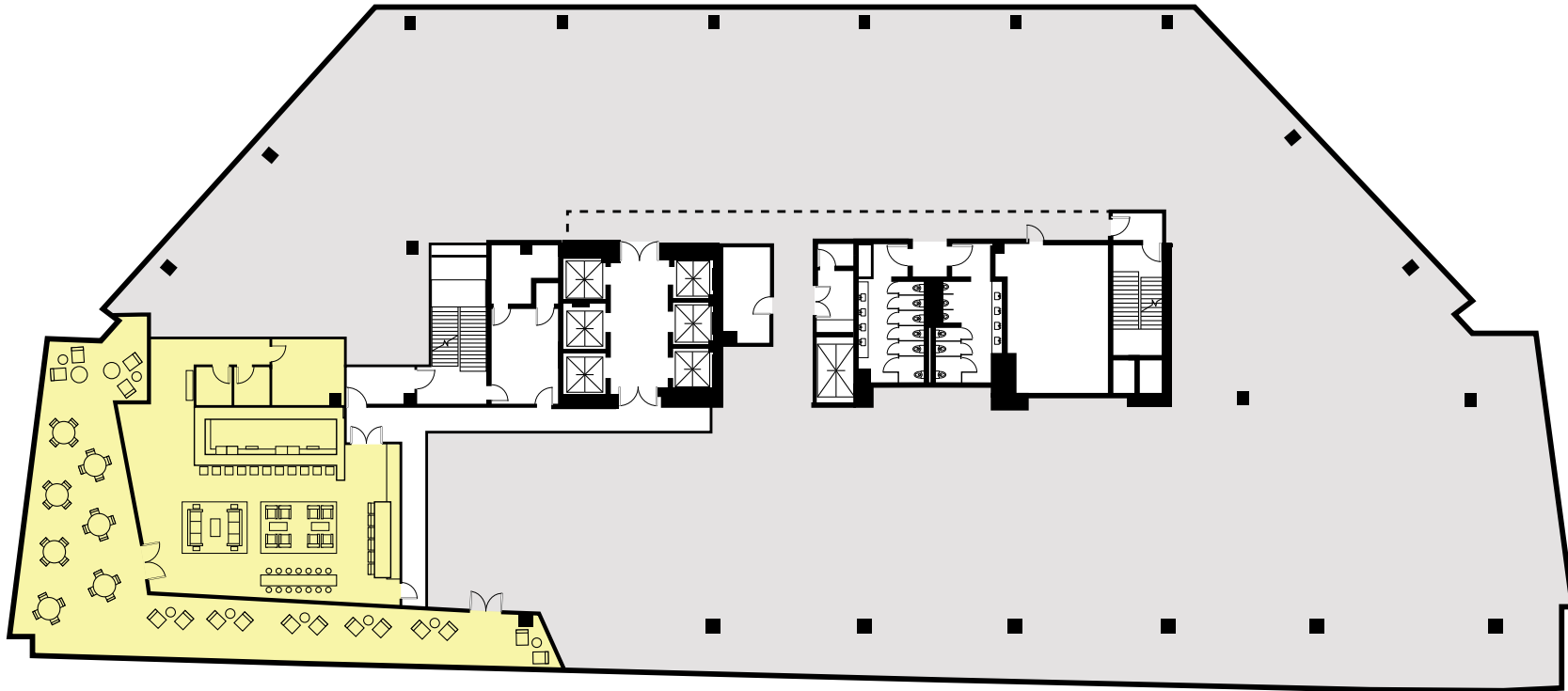
31,000 sq.ft floorplate size  
allowing increased flexibility  
for high-density users.

## Ceiling Height

15'

## Column Spacing

45 ft x 30 ft typical bay



## LOCATION

401 South 1st Street  
Austin, Texas 78704  
riversouthaustin.com

## OFFICE LEASING

Edvin Beasley  
(512) 481-3031  
edvin.beasley@streamrealty.com